

Take Control. Eliminate SSH Key Sprawl.

Discover, manage and automate the lifecycle of SSH keys across your network and multi-cloud environments.



Take control of your SSH risks

SSH keys enable privileged access to machines across your network, yet security teams often have limited or no control over them. Excessive SSH privileges and unmanaged keys lead to audit failure, or worse, a security breach.

Keyfactor SSH Key Manager helps security teams take back control with centralized visibility and policy enforcement across any network or cloud environment.

57%

say they do not have
an accurate inventory
of SSH keys

—
2021 State of Machine Identity
Management Report



Key Benefits



Simplify SSH audits and compliance

Proactively discover and monitor the use of all SSH keys in your network and clouds from one console.



Reduce risk and eliminate key sprawl

Identify and remove unused or unauthorized SSH keys in your network and enforce regular expiration and rotation.



Automate SSH access and key provisioning

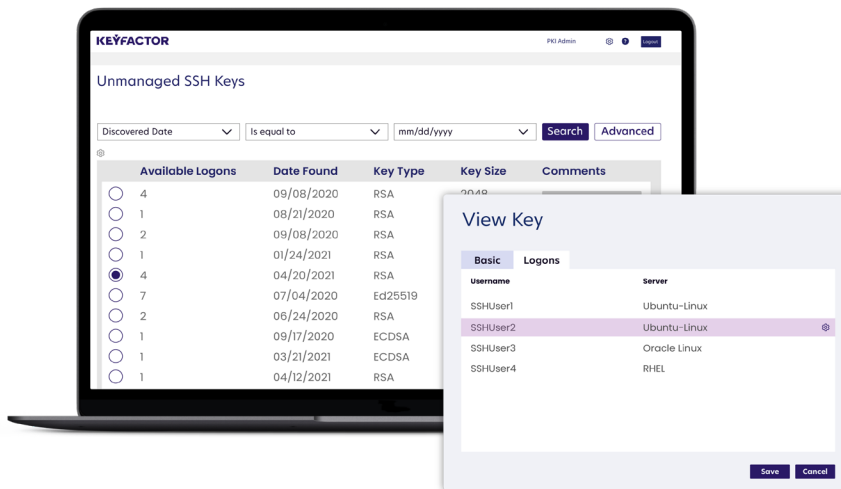
Enable users to generate keys via self-service and automate deployment to server and cloud workloads.



Key Capabilities

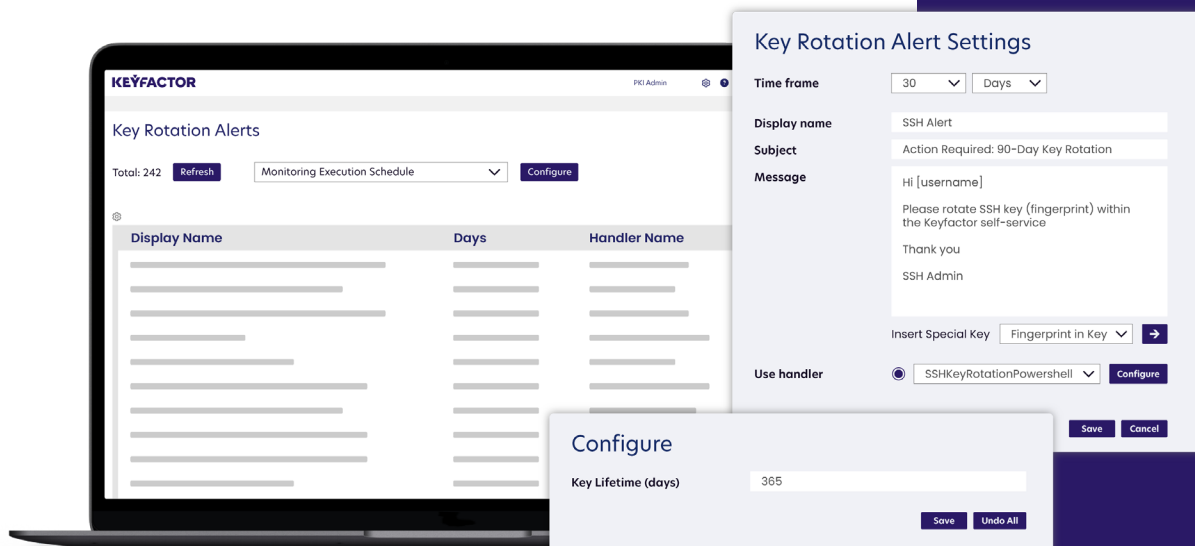
Discover unknown and unauthorized SSH keys

Automatically scan hosts across your network and cloud services, and bring keys into one platform. Once discovered, you can easily search through your inventory and map keys to associated users, machines and service accounts.



Remediate risks and enforce key rotation

Switch from inventory-only to manage mode to identify and remove unauthorized or stale keys with just a click. Define maximum key lifespans and schedule automated key rotation alerts to ensure compliance with enterprise policy.



HOW IT WORKS



Discover

Find all of your SSH keys and manage them effectively from a single console.



Remediate

Quickly delete outdated, non-compliant, or rogue keys in real-time.

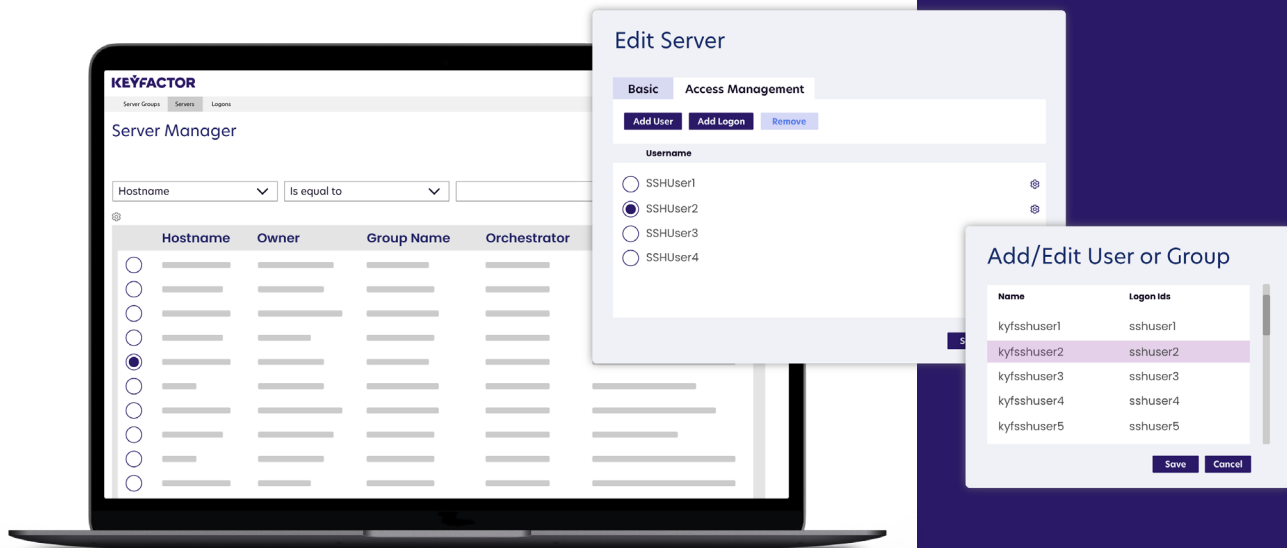


Automate

Enable users to generate keys on-demand and automatically deploy them to servers.

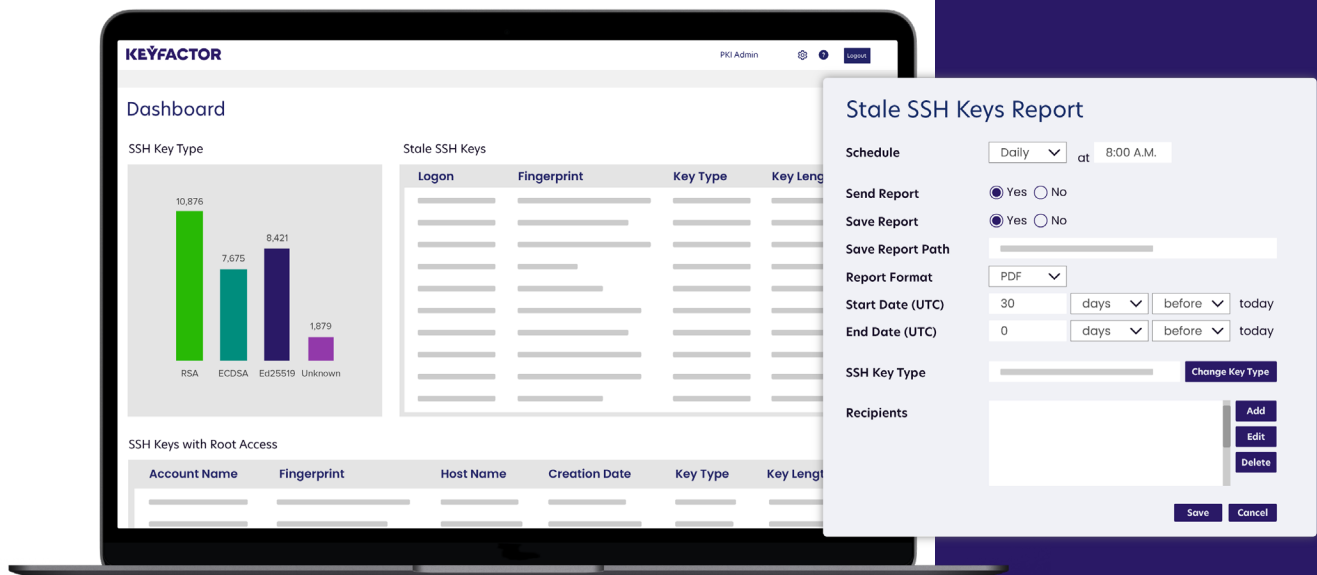
Automate SSH access and key deployment

SSH Key Manager syncs with Active Directory (AD) or your identity provider to easily assign and revoke SSH access for specific users and groups. Bash Orchestrators work seamlessly to automatically provision and revoke SSH keys from servers or server groups.



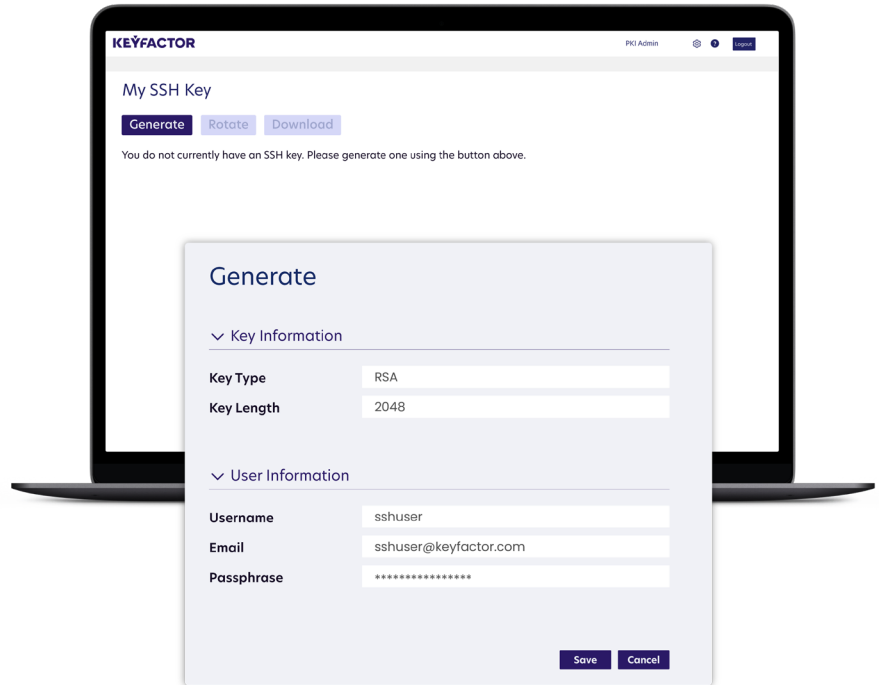
Simplify audits and stay ahead of threats

Get real-time visibility into SSH keys and configurations, such as key algorithms, status, and root access. Schedule reports on key rotation status and access privileges, and get notified when rogue keys are created out of band.



Divide and conquer your SSH key landscape

Delegate role-based access to enterprise administrators, server administrators, and end users – allow users to generate and rotate their own keys via self-service portal or REST API.



Why Keyfactor

Cloud-first

Deploy SSH Key Manager in the cloud as a service or on-premise as a software appliance.

Automation-friendly

Remote install scripts allow you to assign SSH access immediately as servers are spun up.

Non-disruptive

Works with your existing SSH keys and connections, no need for heavy scripting.

No per-host fees

Simple, predictable pricing. Scale up fast without per-host fees getting in your way.

Easy to integrate

Open-source bash orchestrator plugs into Oracle Linux, RHEL, Ubuntu, and more.

Platform or standalone

SSH Key Manager is available as an add-on module or a standalone product.



See it in action

Find out how to take control of your SSH keys. Book a demo today.

[REQUEST DEMO](#)